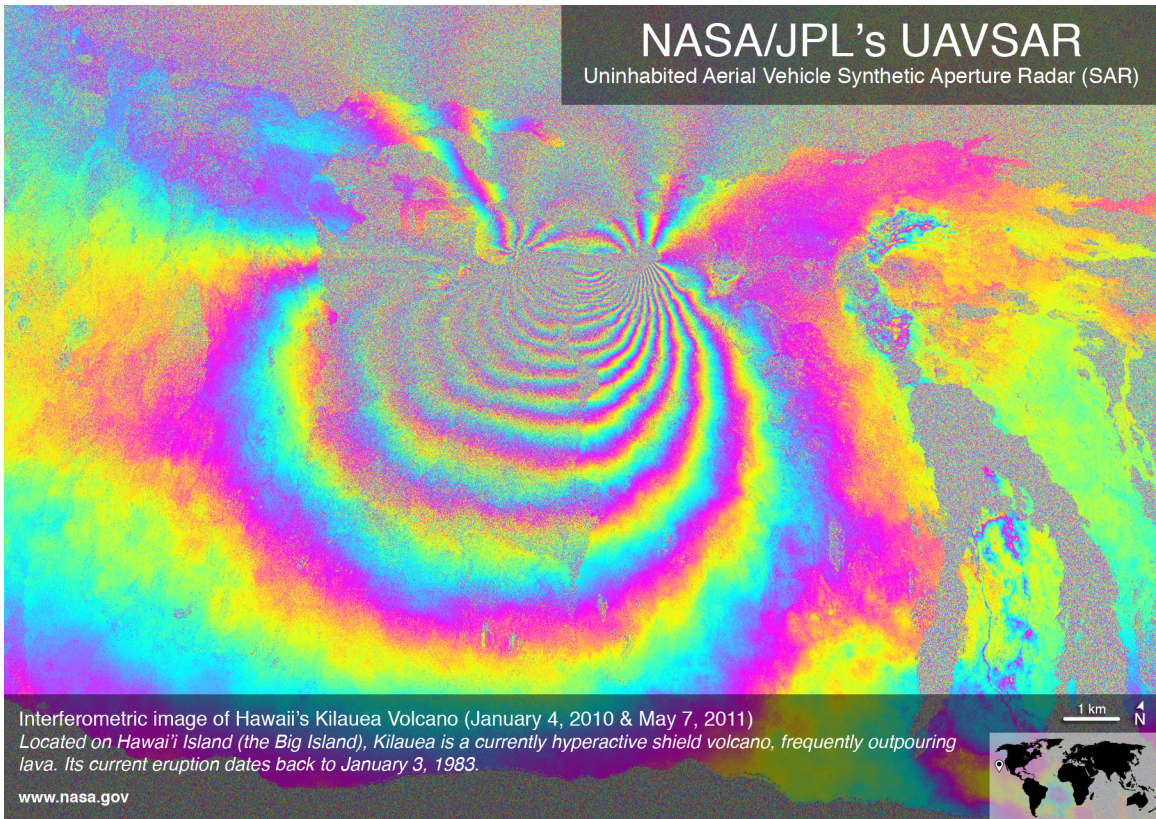


## NASA/JPL's UAVSAR

Uninhabited Aerial Vehicle Synthetic Aperture Radar (SAR)



Interferometric image of Hawaii's Kilauea Volcano (January 4, 2010 & May 7, 2011)

*Located on Hawai'i Island (the Big Island), Kilauea is a currently hyperactive shield volcano, frequently outpouring lava. Its current eruption dates back to January 3, 1983.*

[www.nasa.gov](http://www.nasa.gov)